

# Article Title Here In *Title Case* (Alt+A)

## Subtitle In *Title Case* (Optional)(Alt+S)

First name Last name<sup>1,\*</sup> First name Last name<sup>2</sup>(Alt+A)

<sup>1</sup> Enter Author Affiliation 1 (Alt+L)

<sup>2</sup> Enter Author Affiliation 2 (Alt+L)

\*Corresponding author. Email: [author@example.com](mailto:author@example.com) (Alt+C)

### ABSTRACT

The Atlantis Press Proceedings article template has many predefined paragraph styles for you to use/apply as you write your paper. To format your abstract, use the Microsoft Word template style: [Abstract]. Each paper must include an abstract. Begin the abstract with the title “Abstract” in bold font, followed by a paragraph with normal 10-point font. Do not cite references in the abstract. Please do not place or cite tables and figures in the abstract either.

**Keywords:** *Keywords are your own designated keywords separated by commas (“,”). Keyword 1, Keyword 2, Keyword 3, Keyword 4.*

## 1. FIRST LEVEL HEADING (HEAD 1)

The body text starts with a standard first-level heading like INTRODUCTION or any other heading suitable to the content and context. First level headings are in all caps. Copy the content and replace it for other first-level headings in remaining text. Reference citations should be within square bracket [1]. Headings should always be followed by text.

This template, modified in MS Word 2007 and saved as a “Word 97-2003 Document” for the PC, provides authors with most of the formatting specifications needed for preparing electronic versions of their papers. All standard paper components have been specified for three reasons: (1) ease of use when formatting individual papers, (2) automatic compliance to electronic requirements that facilitate the concurrent or later production of electronic products, and (3) conformity of style throughout a conference proceedings.

### 1.1. Second Level Heading (Head 2)

First, confirm that you have the correct template for your paper size. This template has been tailored for output on the A4 paper size.

In this template, the “Styles” menu should be used to format your text if needed. Highlight the text you want to designate with a certain style, and then select the appropriate name on the Style menu. The style will

adjust your fonts and line spacing. Use italics for emphasis; do not underline. To insert images in Word, position the cursor at the insertion point and either use Insert | Picture | From File or copy the image to the Windows clipboard.

#### 1.1.1. Third Level Heading (Head 3)

Headings may be numbered or unnumbered (“1 Introduction” and “1.2 Numbered level 2 head”), with no ending punctuation. As demonstrated in this document, the initial paragraph after a heading is not indented.

#### 1.1.1.2. Fourth Level Heading

This is a fourth level heading. You can replicate it where suitable.

## 2. STYLE PALETTE

Styles can be applied using the style palette available within the template. To activate it the press Ctrl+Shift+s. Apply the style as required based on the content and context. (Please don’t highlight your text in yellow.)

## 3. MATH AND EQUATIONS

Scalar *variables* and *physical constants* should be italicized, and a bold (non-italics) font should be used

for **vectors** and **matrices**. Do not italicize subscripts unless they are variables. Equations should be either display (with a number in parentheses) or inline. Use the built-in Equation Editor or MathType to insert complex equations.

Display equations should be flush left and numbered consecutively, with equation numbers in parentheses and flush right. First, use the equation editor to create the equation. Then, select the equation, and set the “Equation” Style. Press the tab key and type the equation number in parentheses.

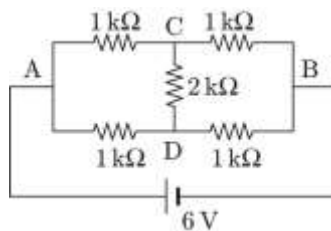
$$\frac{-b \pm \sqrt{b^2 - 4ac}}{2a} \quad (1)$$

$$\frac{n!}{r!(n-r)!} \quad (2)$$

Be sure the symbols in your equation have been defined before the equation appears or immediately following. Please refer to “Equation (1),” not “Eq. (1)” or “equation (1).”

#### 4. FIGURES AND TABLES

Figures and tables should be placed either at the top or bottom of the page and close to the text referring to them if possible.



**Figure 1** Caption content. The title “Figure” and the label should be in **bold**.

For small tables, please place it within a column and bigger table be placed in a text frame spanning to both columns. Use the Table facility available within the

**Table 1.** Short cut keys for the template

Styles	Shortcuts	Styles	Shortcuts
Article-Title	Alt+A	Head 2	Ctl+2
Author-Name	Alt+N	Head 3	Ctl+3
Affiliation	Alt+L	Head 4	Ctl+4
Corresponding	Alt+C	ListBullet	Alt+U
Abstract	Alt+B	ListNumbered	Alt+Ctl+N
Key words	Alt+K	Table foot	Alt+Ctl+F
Equation	Alt+E	Fig caption	Alt+G
Para	Alt+P	Acknowledgment	Alt+W
Head 1	Ctl+1	Reference title	Alt+T
Reference item	Alt+R		

MSWord. The font in the row header should be bold and you can use the style available from the style palette.

#### AUTHORS’ CONTRIBUTIONS

The title "AUTHORS’ CONTRIBUTIONS" should be in all caps.

#### ACKNOWLEDGMENTS

The title "ACKNOWLEDGMENTS" should be in all caps and should be placed above the references. The references should be consistent within the article and follow the same style. List all the references with full details.

#### REFERENCES

- [1] E.M. Clarke, E.A. Emerson, Design and synthesis of synchronization skeletons using branching time temporal logic, in: D. Kozen (Eds.), Workshop on Logics of Programs, Lecture Notes in Computer Science, vol. 131, Springer, Berlin, Heidelberg, 1981, pp. 52–71. DOI: <https://doi.org/10.1007/BFb0025774>
- [2] J.P. Queille, J. Sifakis, Specification and verification of concurrent systems in CESAR, in: M. Dezani-Ciancaglini and U. Montanari (Eds.), Proceedings of the 5th International Symposium on Programming, Lecture Notes in Computer Science, vol. 137, Springer, Berlin, Heidelberg, 1982, pp. 337–351. DOI: [https://doi.org/10.1007/3-540-11494-7\\_22](https://doi.org/10.1007/3-540-11494-7_22)
- [3] C. Baier, J-P. Katoen, Principles of Model Checking, MIT Press, 2008.
- [4] M. Kwiatkowska, G. Norman, D. Parker, Stochastic model checking, in: M. Bernardo, J. Hillston (Eds.), Proceedings of the Formal Methods for the Design of Computer, Communication and Software Systems:

- Performance Evaluation (SFM), Springer, Berlin, Heidelberg, 2007, pp. 220–270. DOI: [https://doi.org/10.1007/978-3-540-72522-0\\_6](https://doi.org/10.1007/978-3-540-72522-0_6)
- [5] V. Forejt, M. Kwiatkowska, G. Norman, D. Parker, Automated verification techniques for probabilistic systems, in: M. Bernardo, V. Issarny (Eds.), Proceedings of the Formal Methods for Eternal Networked Software Systems (SFM), Springer, Berlin, Heidelberg, 2011, pp. 53–113. DOI: [https://doi.org/10.1007/978-3-642-21455-4\\_3](https://doi.org/10.1007/978-3-642-21455-4_3)
- [6] G.D. Penna, B. Intrigila, I. Melatti, E. Tronci, M.V. Zilli, Bounded probabilistic model checking with the muralpha verifier, in: A.J. Hu, A.K. Martin (Eds.), Proceedings of the Formal Methods in Computer-Aided Design, Springer, Berlin, Heidelberg, 2004, pp. 214–229. DOI: [https://doi.org/10.1007/978-3-540-30494-4\\_16](https://doi.org/10.1007/978-3-540-30494-4_16)
- [7] E. Clarke, O. Grumberg, S. Jha, et al., Counterexample-guided abstraction refinement, in: E.A. Emerson, A.P. Sistla (Eds.), Computer Aided Verification, Springer, Berlin, Heidelberg, 2000, pp. 154–169. DOI: [https://doi.org/10.1007/10722167\\_15](https://doi.org/10.1007/10722167_15)
- [8] H. Barringer, R. Kuiper, A. Pnueli, Now you may compose temporal logic specifications, in: Proceedings of the Sixteenth Annual ACM Symposium on the Theory of Computing (STOC), ACM, 1984, pp. 51–63. DOI: <https://doi.org/10.1145/800057.808665>
- [9] A. Pnueli, In transition from global to modular temporal reasoning about programs, in: K.R. Apt (Ed.), Logics and Models of Concurrent Systems, Springer, Berlin, Heidelberg, 1984, pp. 123–144. DOI: [https://doi.org/10.1007/978-3-642-82453-1\\_5](https://doi.org/10.1007/978-3-642-82453-1_5)
- [10] B. Meyer, Applying "Design by Contract", Computer 25(10) (1992) 40–51. DOI: <https://doi.org/10.1109/2.161279>
- [11] S. Bensalem, M. Bogza, A. Legay, T.H. Nguyen, J. Sifakis, R. Yan, Incremental component-based construction and verification using invariants, in: Proceedings of the Conference on Formal Methods in Computer Aided Design (FMCAD), IEEE Press, Piscataway, NJ, 2010, pp. 257–256.
- [12] H. Barringer, C.S. Pasareanu, D. Giannakopolou, Proof rules for automated compositional verification through learning, in Proc. of the 2nd International Workshop on Specification and Verification of Component Based Systems, 2003.
- [13] M.G. Bobaru, C.S. Pasareanu, D. Giannakopoulou, Automated assume-guarantee reasoning by abstraction refinement, in: A. Gupta, S. Malik (Eds.), Proceedings of the Computer Aided Verification, Springer, Berlin, Heidelberg, 2008, pp. 135–148. DOI: [https://doi.org/10.1007/978-3-540-70545-1\\_14](https://doi.org/10.1007/978-3-540-70545-1_14)